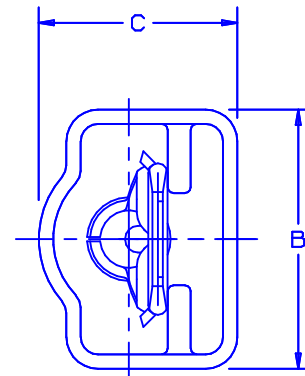
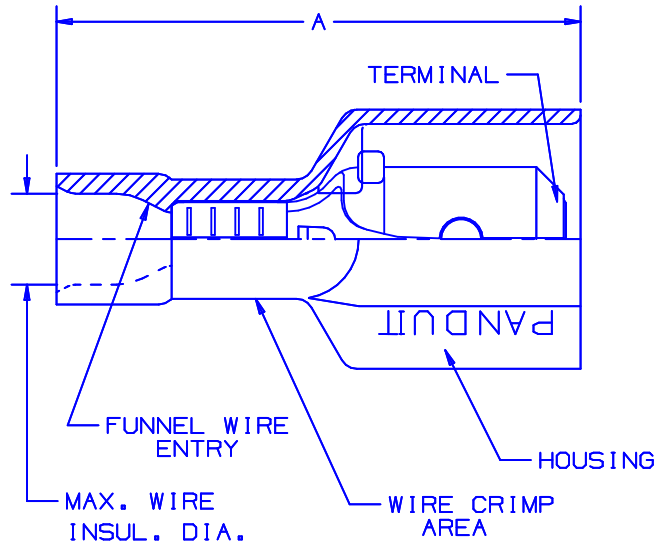


NOTES:

1. UL LISTED AND CSA CERTIFIED FOR:
 - A. 600V MAX. VOLTAGE RATING.
 - B. 221°F (105°C) MAX. TEMP. RATING (CSA).
 - C. 257°F (125°C) MAX. TEMP. RATING (UL).
 - D. STRANDED COPPER WIRE ONLY.
2. MATERIAL:
 - A. STAMPING-CDA 260 BRASS, NICKEL PLATED
 - B. HOUSING-TYPE 6/6 NYLON
3. DIMENSIONS IN BRACKET ARE IN mm OR mm²
4. COLORS ARE TRANSLUCENT
5. WIRE STRIP LENGTH: 9/32 ^{+1/32}₀ (7.1 ^{+0.8}₀)
6. PACKAGE QTY -C=100
-M=1000



PART NUMBER	TAB SIZE	WIRE RANGE AWG	COLOR (note 4)	MAX. INSUL.	DIMENSIONS in			CRIMP TOOLS
					A ^{±.03}	B ^{±.02}	C ^{±.02}	
DNF18-250FIM	.250 X .032 (6.3 X 0.8)	22-18 (0.5-1.5)	RED	.133 (3.38)	.90 (22.9)	.42 (10.7)	.27 (6.9)	CT-520 CT-1525
DNF14-250FIM	.250 X .032 (6.3 X 0.8)	16-14 (1.5-2.5)	BLUE	.158 (4.01)	.90 (22.9)	.42 (10.7)	.27 (6.9)	



LISTED
20H3
E78522



CERTIFIED
LR31212

A41325_07

REV	DATE	BY	CHK	DESCRIPTION	ECN #	PM	CUST
07	7/03	KLFU		ADDED INTERNAL SERRATIONS			
06	2/01	KMD	JAC	DRAWING NUMBER WAS 41325A	09052	TRO	JAC
05	5/98	TM	RS	ADDED CT-1525 TO TOOL CHART, WAS TIN PLATED	06872		
04	10/94	TH	RS	UPDATED NOTES AND DIMENSIONS	02553	TK	LA

PANDUIT CORP.

TINLEY PARK, ILLINOIS

LOOSE PC. FULLY INSULATED MALE DISCONNECT
.250 X .032

DRAWN BY	JV	CHK'D	LM	SCALE		DRAWING NO.	A41325
----------	----	-------	----	-------	--	-------------	--------